



## SELECTED ARTISTS: JIM HIRSCHFIELD AND SONYA ISHII

### BACKGROUND:

In 2015, the Bellevue Arts Commission recommended the inclusion of a public artwork for Lattawood Park as part of the Arts Program’s future work program. In 2016, the Eastgate neighborhood voted, as part of the Neighborhood Enhancement Program, to install lighting along the path through Lattawood Park connecting the neighborhoods to the north and south. Rather than install two separate projects, these two projects and budgets were combined to develop a public art project that will provide lighting along the path.

Artists Jim Hirschfield and Sonya Ishii were selected from a pool of 26 qualified applicants by a panel consisting of community members from each neighborhood to the north and south, and an esteemed professional public artist with experience working on similar projects. Upon selection, the artists were provided with a history of Lattawood Park and the site, and a breakdown of the local demographics detailing the diversity of the community, income and educational attainment, and other factors. In May of 2018, the artists hosted a meet and greet in the park with the community, with over 40 neighbors attending throughout the day. While in Bellevue, the artists also met with the executive director of Eastside Heritage Center to learn more about the unique history of this area. The artists, working with the city to publicize, developed a survey for residents to share their thoughts about the park, their neighborhood, and other elements. This survey received 37 responses and, together with conversations with the community at the meet and greet event, formed the conceptual basis for their proposal.

A couple key takeaways from this outreach:

- Lighting levels will need to strike a balance between lighting the path to improve safety and impacts to neighboring properties from light pollution.
- Protection of the sled run and safety of children - on snowy days, children use the hill across the path and into the drainage field as a sled run. Art or lighting shouldn’t create a potential hazard.
- Major themes that emerged were a love of nature and an appreciation for the qualities of the neighborhood including the setting, a strong sense of community, and the diversity of the local population.

### PROJECT SCHEDULE:

It is estimated that this project will be fabricated and installed by the summer of 2019.

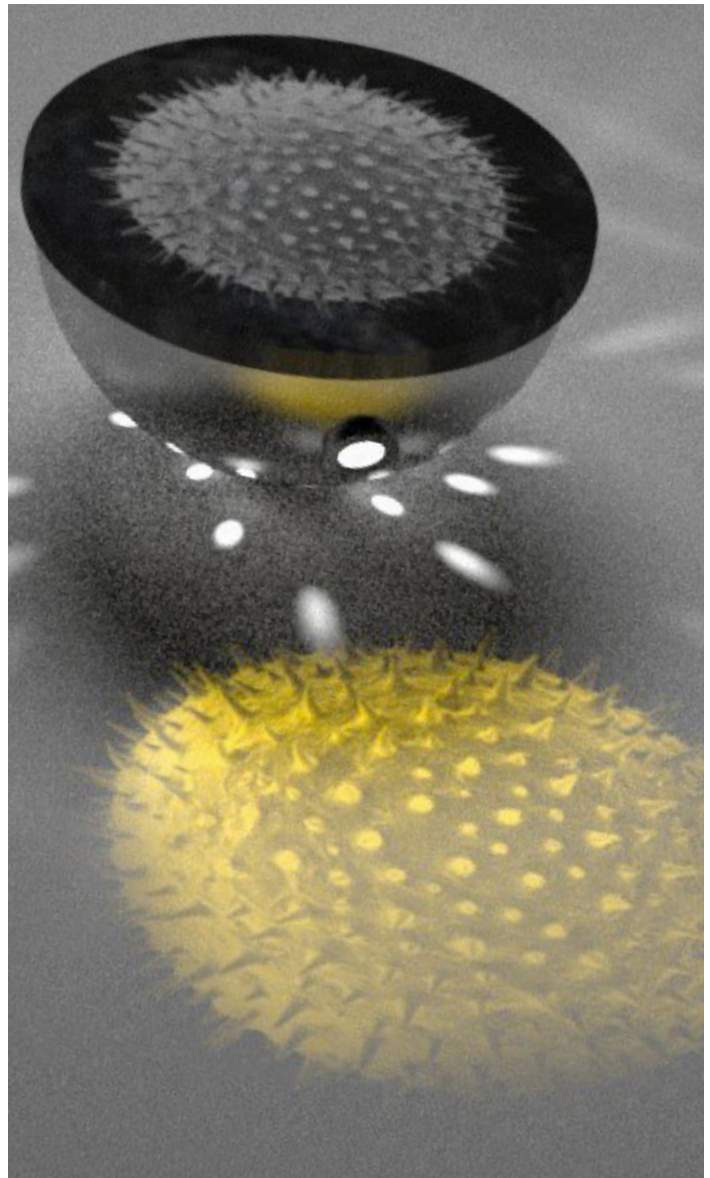






**ARTIST’S PROPOSAL:**

“Our proposal for Lattawood Park is the creation of three sculptures that venerate *Nature’s Integral Fragments*. The artwork will consist of three hemispheric stainless-steel vessels thirty-six inches in diameter with lighting and projections emanating from the base onto the path. Each will host black granite tops that are etched with images from nature. (Black granite will provide the best contrast for our images.) The lighting from the art will be supplemented, where possible, with 3 foot tall bollard lighting (see map for proposed locations of artwork and bollard lights).



The images taken from nature will be of it’s tinier, more hidden elements: pollen grains. We chose each pollen for their elegance, their mysteriousness and their cylindrical designs. Rather than designing images that are obvious candidates (flowers and branches within the park) we chose to select images that people don’t usually see.

*The diversity of the phenomena of nature is so great, and the treasures hidden in the heavens so rich, precisely in order that the human mind shall never be lacking in fresh nourishment.*

- Johannes Kepler





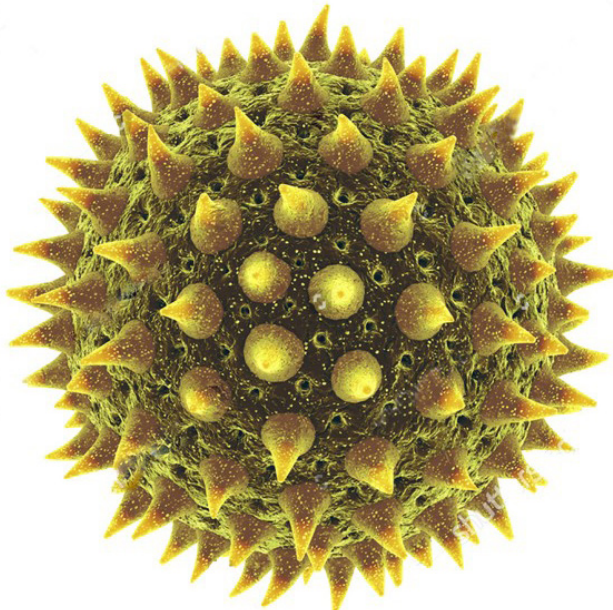
By choosing more hidden images, we are able to create more mystery, adding more poetic nuance to the artwork. By selecting similar but still distinct pollens we are also touching upon the diversity that is a part of the surrounding neighborhoods.

We ascertained from our conversations with community members and from the various responses to our survey, that the community is most interested in a low level of lighting. To provide this type of lighting, we plan to place within the interior of each vessels, LED lights and a LED projector. Each vessel will have strategically placed openings that enable the light from the interior to spill out onto the adjacent ground to light the path and adjacent ground in elegant patterns. The light from the LED projector will flow across the path in a manner that illuminates the path with enough light to aid walking but not so much as to become a light nuisance. The images that each projector will cast, will correspond to the images that are etched onto the granite tops within which they are housed. We plan to use LED lights within the work as LED lighting is cost effective, very long lasting and provides the opportunity to change color in a deliberate fashion.

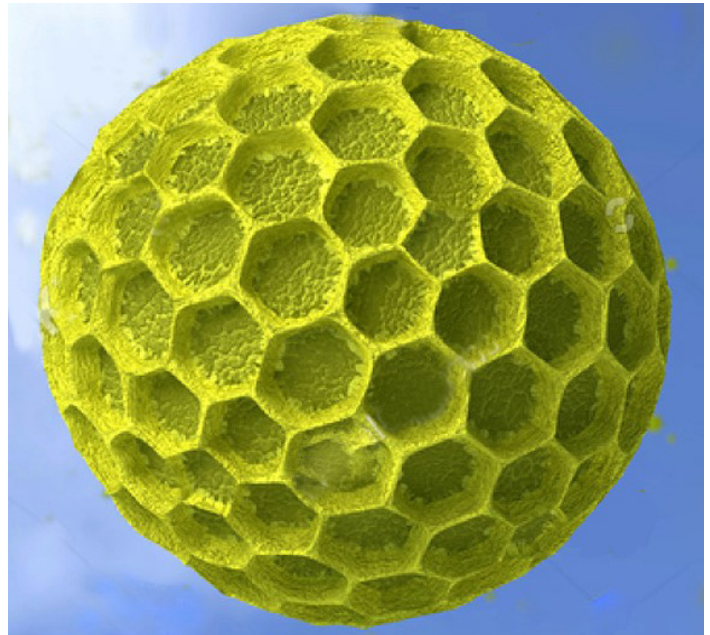
From our conversations with the community and survey we also understand that what the community appreciates about their neighborhood is its friendliness, neatness, diversity, convenience and natural surroundings. They also have an appreciation for the families of the neighborhoods and its strong sense of community. We believe we have succeeded in representing each of these values within our concept.

*But youth is the pollen  
That blows through the sky  
And does not ask why.*

- Stephen Vincent Benet



A grain of pollen addresses several other important community values. Every tree, shrub, and blade of grass begins with pollen fertilization and pollen brings to mind the complex network of plant and animal life that flourishes around us. We thus see pollen as an ideal metaphor for familial and neighborly relationships; both of which are very important to the community.



Nature's pollens of course correspond to the community's love of the natural environment surrounding each neighborhood, while the variety of pollens will reference both diversity and inclusion. At the same time the vessels' designs hosting the images are simple, with clean lines that fit the community's orderliness. In addition, the artworks' low profiles will enable families and friends to use them as benches and pedestals for family photo opportunities.

Through their design and fabrication, we are confident our artworks will have a unique visual quality. Instead of a static work of art, this work will shift and change along with the weather and seasons. During daylight hours the viewer will focus on the elegant images etched into the granite tops. As the sun sets the pieces will begin their metamorphosis, transforming into beautiful and serene lanterns. (Lanterns allude to a number of cultures, especially those of East and Southeast Asia.) When the benches transform into lanterns, they offer the viewer a different way to look at and ponder the nature it extols. Whether passing through or playing within Lattawood park, we strongly believe the artworks will offer its audiences a dramatic art experience."

-Jim Hirschfield and Sonya Ishii